



Twin Screw Extruder

Spare Parts

Extruder Service

Maintenance Equipment

Total Solution Provider





CONTENTS

- Company Introduction
- Product & Service
- Extruder Spare parts
- Material Solutions
- Maintenance & Replacement of Gearboxes
- Maintenance Equipment & Service
- Network & Customers

**extruder
experts**





COMPANY INTRODUCTION

Jiangmen PromaXX Extrusion Technology Co.,Ltd. is a Sino-German joint venture with rich experience in the extruder industry.

Extruder Experts GmbH & CO.KG, our German shareholder, is a wellknown brand with good reputation in European market.

We are dedicated to providing our customers with screw elements, barrels, shafts and other twin-screw extruder accessories, as well as the maintenance & replacement of gearboxes, screws dismantling equipment, screws cleaning equipment, barrel screw wear detection and other professional technical services.



WHY PROMAXX?



**Rich experience
in extruder industry.**



**Professional solutions
for high wear and
corrosion resistant steels.**



**Strict quality
management system.**

Screw Elements

Brands	Coperion, Leistritz, KraussMaffei, JSW, Toshiba, Baker Perkins, SM Platek, Wenger, Clextral, Bühler, BUSS and many other famous brands
Materials	Tool steel, PM-HIP steels, stainless steel, Ni-based alloys, Co-based alloys, Tip-welding



Barrels

Brands	Coperion, Leistritz, KraussMaffei, JSW, Toshiba, Baker Perkins, SM Platek, Wenger, Clextral, Bühler and many other famous brands
--------	--



Shaft & Accessories

Spline Type	<ul style="list-style-type: none"> -DIN5480 /JIS-B-1603/GB3478 involutes spline -Hexagon -Half-round key slot
-------------	--



Maintenance & Replacement of Gearboxes

Product Services	<ul style="list-style-type: none"> • Customized new gearbox • Replacement of original gearbox • Maintenance and repair of gearbox <p>Maintenance experience of top brands gearboxes such as Henschel, Eisenbeiss, Zambello, Flender, JSW, etc.</p>
------------------	---



Maintenance Equipment & Service

Maintenance Equipment	<ul style="list-style-type: none"> • PRO-COOL Screw Cleaning Machine (D100 Covered Type/D150 Open Tyoe) • PRO-EASY Screw Dismantling Machine • PRO-CLEAN Cooling Channel Cleaning Machine • PROMAC Barrel Wear Inspection Device
-----------------------	--



Diameter	Φ10-Φ450 mm
Brands	Coperion, Leistritz, KraussMaffei, JSW, Toshiba, Baker Perkins, SM Platek, Wenger, Clextral, Bühler, BUSS and many other famous brands.
Materials	Tool steel, PM-HIP steels, stainless steel, Ni-based alloys, Co-based alloys, Tip-welding



Conveying Element



Single
Flighted

Double
Flighted

SK
Flighted

Kneading Block

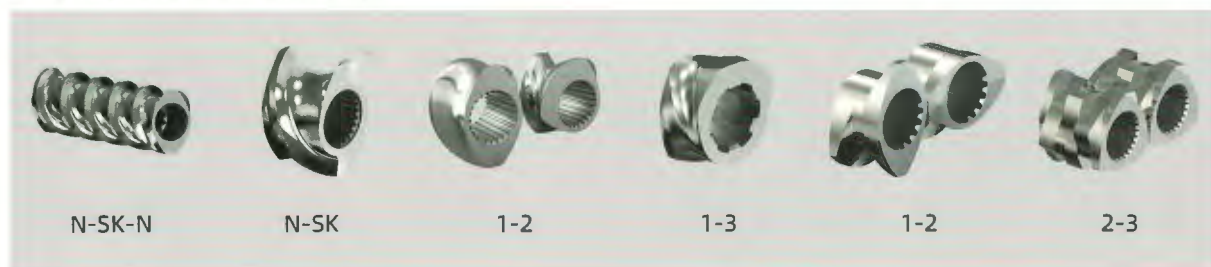


RKB

NKB

XKB

Transition Element



N-SK-N

N-SK

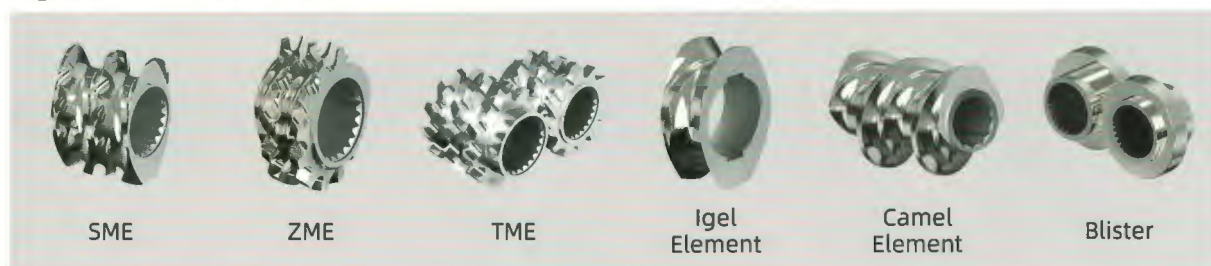
1-2

1-3

1-2

2-3

Special Element



SME

ZME

TME

Igel
Element

Camel
Element

Blister

EXTRUDER SPARE PARTS

BARRELS & ACCESSORIES

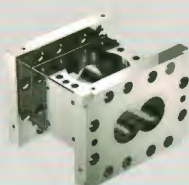


Diameter	Φ10-Φ450mm
Brands	Coperion, Leistritz, KraussMaffei, JSW, Toshiba, Baker Perkins, SM Platek, Wenger, Clextral, Bühler and many other famous brands.
Types	Closed、Feed、Side-open、Combi, etc.

Barrels



ZSE series



ZSK series

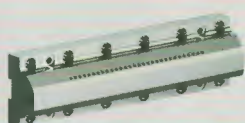


ZE series



BC / EV series

Accessories



Die Plate



Die Head



Breaker Plate



Intermediate plate



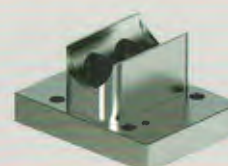
Dummy Plug



Degasing Plug



Side-feeder Plug



Side-feeder Adapter

SHAFTS & ACCESSORIES

EXTRUDER SPARE PARTS

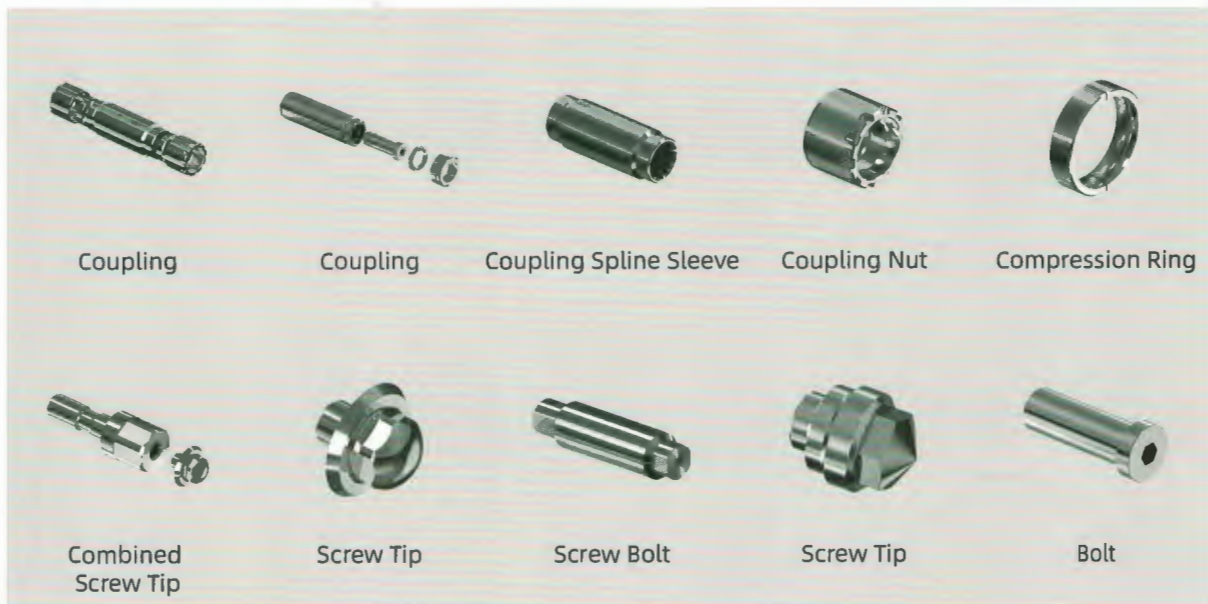
Diameter	Φ10-Φ120mm
Length	< 12 Meter
Spline Type	DIN5480、JIS-B-1603、GB3478 Involute Spline Hexagon, Keyway Half-round key slot, Rectangular spline
Material	High torque steels (Power density up to 18Nm/ cm ³)



Shafts & Accessories



Other Accessories





European Steel
Grades

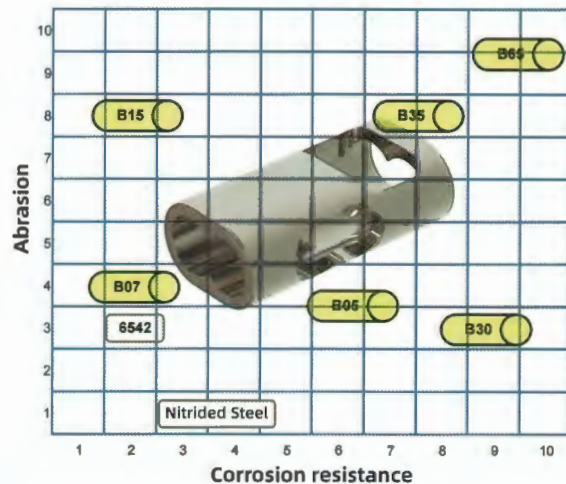
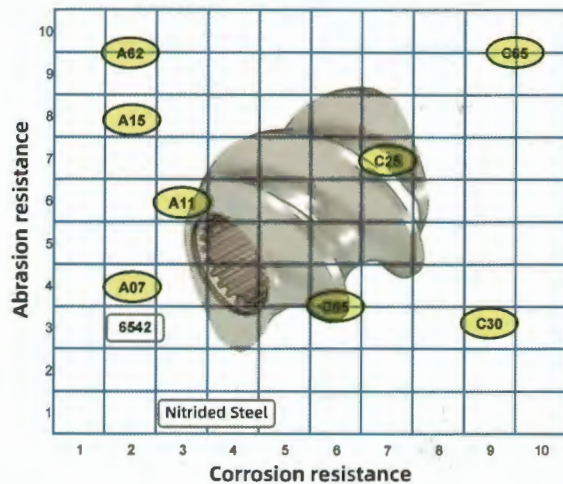
IQC of
Raw Material

Professional
heat treatment

- Cold-working tool steels;
- Martensite stainless steels;
- PM-HIP tool steels, PM-HIP HSS;
- Ni-based alloys, Co-based alloys

- Chemical analysis;
- Microstructure inspection;
- Material certificate;
- Certificate of Origin

High pressure vacuum quenching,
vacuum tempering, gas nitriding,
plasma nitriding, QPQ, etc.



Spare Part	Characters	Code	Steel Category	Hardness (HRC)	Abrasion Resistance (1-10)	Corrosion Resistance (1-10)	Mechanical Properties (1-10)
Screw Element	Abrasion Resistance	A07	Cold working tool steel	56 - 60	4	2	4
		A11	Cold working tool steel	58 - 62	6	4	6
		A15	PM-HIP tool steel	60 - 64	8	2	6
		A62	PM-HIP high speed steel	64 - 66	10	2	4
	Corrosion Resistance	C05	Stainless steel	55 - 58	3	5	4
		C09	Stainless steel	46 - 50	3	7	5
		C25	PM-HIP high chrome steel	56 - 60	7	7	6
		C30	Special stainless steel	56 - 60	3	9	8
Liner Plug Die Plate	Abrasion Resistance	C65	Ni-based alloy	58 - 62	9	9	5
		B07	Cold working tool steel	56 - 60	4	2	4
	Corrosion Resistance	B15	PM-HIP tool steel	58 - 62	8	2	5
		B05	Stainless Steel	55 - 58	4	6	4
		B35	PM High Chrome Steel	58 - 62	8	7	5
		B30	High Nitrogen Steel	56 - 60	3	8	8
Shaft Screwtip Coupling	High Torque	B65	Ni-based alloy	58 - 62	9	9	5
		HT	Tool Steel	38 - 42	****	****	****
		CT	Stainless Steel	36 - 40	***	***	***
		ST	Special Stainless Steel	40 - 44	*****	*****	*****

Customized new gearbox Replacement of original gearbox

- » Adopting a dual power distribution structure, torque factor $>13\text{Nm/cm}^3$
- » Professional forward research and development capabilities, able to provide professional customized gearbox and services
- » Top brands bearings and sealings
- » Professional assembly and testing technology, rigorous factory inspection of the entire machine
- » Lifetime maintenance and after-sales service



Maintenance and Repair of gearbox

- » Monitoring, analysis, and diagnosis of gearbox vibration spectrum and noise
- » Oil temperature monitoring, oil analysis, abrasive wear detection
- » Evaluation of gear meshing status and strength verification; Prediction of bearing life and status warning
- » Actual back pressure detection during screw operation; Motor shaft/input shaft alignment detection
- » Maintenance experience of top brands gearboxes, such as Henschel, Eisenbeiss, Zambello, Flender, JSW, etc.



PRO-COOL D100

Covered Screw Cleaning Machine

- ✓ High Pressure Water Cleaning
- ✓ Easy & Convenient Operation
- ✓ Closed Hatch Design Safe & Low Noise
- ✓ For Small & Medium-sized Screw Cleaning



PARAMETERS

Overall Dimensions	4300*1200*1900mm(L*W*H)
Max Screw Length	3.2m(customizable)
Max Screw Diameter	φ100mm
Weight	2000KG
Power Supply	380V / 50Hz / 43KW
Cleaning Pressure	2000 / 2500 Bar
Cleaning Efficiency	Average<30mins/screw
Cleaning Media	Tap Water
Water Flow Rate	9L/min
Filter	One-stage
Screw Rotating Speed	Adjustable
High-pressure Pump	URACA or OH
Moto	ABB
PLC	Mitsubishi, Siemens

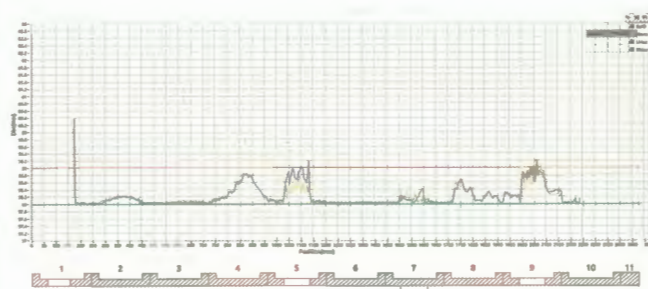
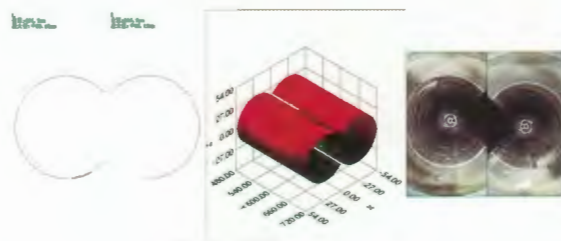


PROMAC Barrel Wear Inspection Device

- ✓ Applicable for all Liner Material
- ✓ Wider Detection Range
- ✓ Real-Time VCR
- ✓ Intuitive Wear Curve
- ✓ 3D Scan of Inner Bore

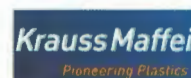
PARAMETERS

Overall Dimensions	φ38mm*650mm
Power Supply	3.7V Lion-Battery
Total Weight	1.5KG (measuring head)
Power	< 2W
Efficiency of Measurement	< 30mins
Inner Diameter Range	φ40-450mm (customizable)
Accuracy	±0.01mm
Circumferential Measuring Points	360°
Axial Measurement Resolution	3-5mm
Working Temperature	<50°C
Inner Bore Condition	Clean, Smooth

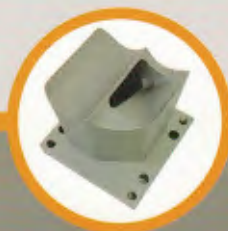




Our Customers



extruder experts



Extruder Experts GmbH & CO.KG
Am Windrad 23
52156 Monschau
Germany
www.extruder-experts.com

Jiangmen PromaXX Extrusion Technology Co.,Ltd.

TEL: +86 750 6620869

ADD: Plant D, Guifeng Road No.329, Xinhui District, Jiangmen City, PR China

24H Service Hotline
+86 18924689556

Email: JSD@promaxx.com.cn
Web: www.promaxx.com.cn
www.extruder-service.com

